



splitting bandknives

LAMEBO s.r.l.

Viale Kennedy - 10040 Leini (TO)

Tel.: +39 011 9910383 • 9910378 • Fax:+39 011 9910424

Skype: Lamebo • [lamebo@lamebo.it](mailto:lamebo@lamebo.it) • [www.lamebo.it](http://www.lamebo.it)

## PER RAGGIUNGERCI IN AUTOSTRADA

### A21 PIACENZA-TURIN

After the **Turin** tollbooth, take the North bypass in the direction **Aosta - Milan**

Follow the signs for **Aosta - Milan** and for the North bypass  
Proceed along the **Turin - Aosta** highway, towards **Aosta**

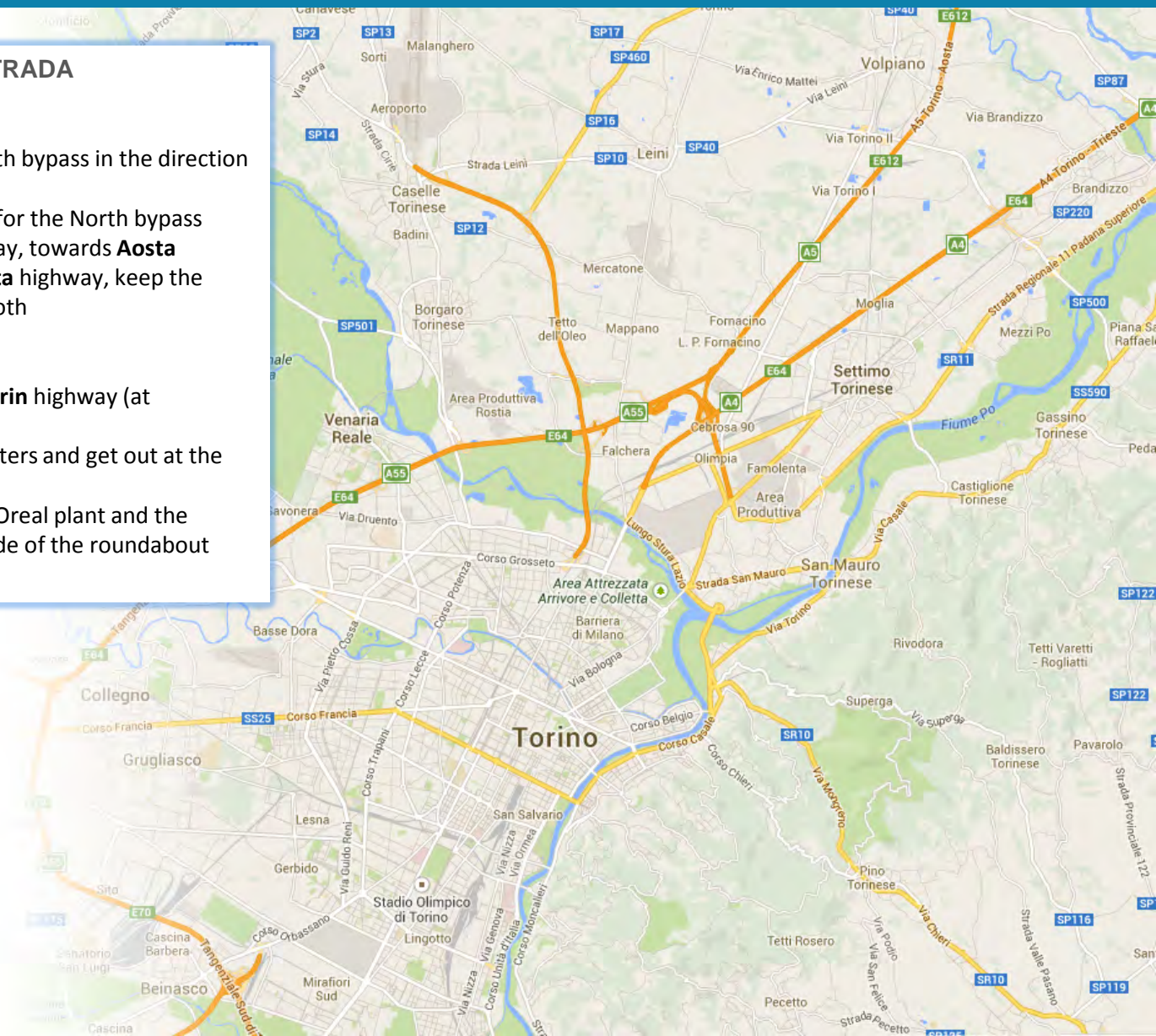
After the tollhouse of the **Torino - Aosta** highway, keep the right and get out at the **Settimo** tollbooth

### A4 MILAN-TURIN

Go pass the tollhouse of the **Milan - Turin** highway (at **Rondissone**)

Continue towards **Turin** for few kilometers and get out at the junction with **Settimo**

Go in the direction of **Leini**, pass the L'Oreal plant and the Lucchini steel plant – they are at the side of the roundabout





splitting bandknives

**LAMEBO s.r.l.**

Viale Kennedy - 10040 Leini (TO)

Tel.: +39 011 9910383 • 9910378 • Fax:+39 011 9910424

Skype: Lamebo • [lamebo@lamebo.it](mailto:lamebo@lamebo.it) • [www.lamebo.it](http://www.lamebo.it)

## MAP DETAILS

- ✓ Continue and pass the flyover, turn left as if in the direction of the highway
- ✓ Take the first road on the right into *Via Leini and after Viale Kennedy*
- ✓ Continue until the first roundabout
- ✓ Take the roundabout and turn 270°
- ✓ Our shed is the white and grey building with blue windows which is on the left of the roundabout

